



euroscreen® Connect Electric

SCREEN SURFACES



Arctiq

Matt white front surface, fibre glass support, black-backed. Gain 1.0

PROJECTION FORMATS



Height > width, with extra height that gives additional flexibility. No black borders.



The screen format is 1:1. No black borders.



NO BLACK BORDERS

The screen format is 4:3. No black borders.



The screen has 5 cm wide black borders. The format of the viewing area is 4:3.



The screen has 5 cm wide black borders. The format of the viewing area is 16:10.



The screen has 5 cm wide black borders. The format of the viewing area is 16:9.

CONTROL OPTIONS



Installation

5m cable. Needs to be installed by electrician.

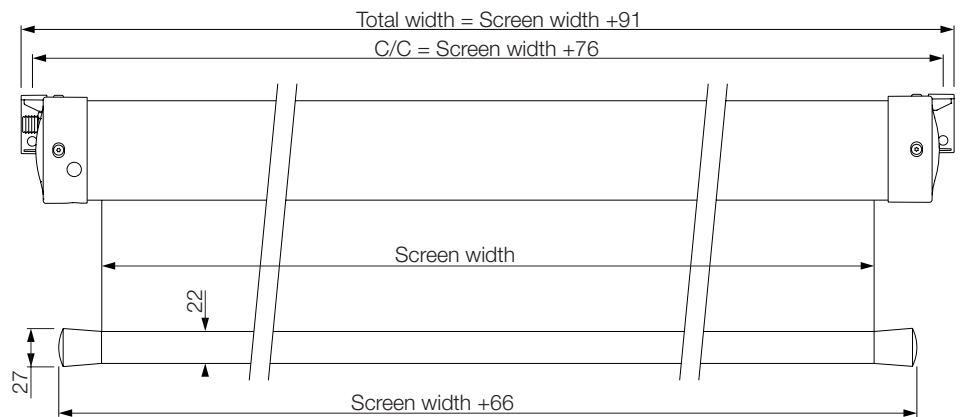


Switch

The screen is operated by a 3-positions in-line switch.

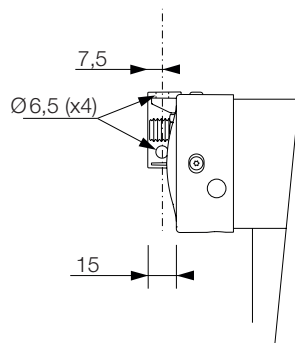
The Connect electric projection screen is the longest established model within the Euroscreen® range. Its cassette has a square design with soft edges, and the white steel case is equipped with matching end caps which can be used for an easy mounting directly onto the wall or the ceiling. Bottom dowel very close wall. Optional wall brackets allow keystone correction.

SCREEN DIMENSIONS

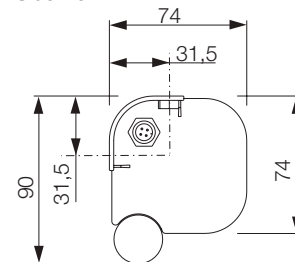


CASE DIMENSIONS

Front view



Side view



ELECTRICAL SPECIFICATIONS

Cable Specifications

Thickness: \varnothing 7 mm

Cable area: 4x0,5mm² , motor to control

3x0,75mm² , control to plug

Wires: Black - Up

Brown - Down

Blue - Neutral

Green/Yellow - Ground

Plug options

Motorized screens, except Installation version, are delivered with either Euro plug or UK plug (both grounded).

Motor Specifications

Voltage: 220 V

Frequency: 50 Hz

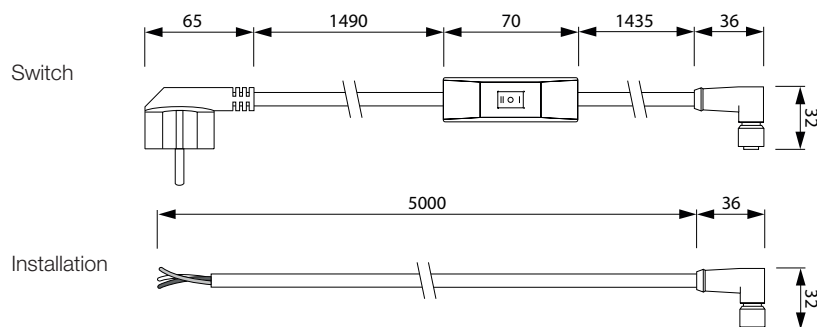
Power: 121 W

Momentum: 6Nm

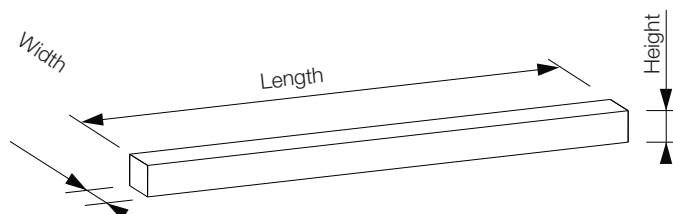
Speed: 28 rpm

Protection: IP44

The motor is grounded.



PACKAGING DIMENSIONS



Screen width	Box length	Box width	Box height
1250	1520	125	130
1500	1770	125	130
1600	1870	125	130
1800	2070	125	130
2000	2270	125	130
2200	2450	125	130
2400	2670	125	130