

ELMO

Envision beauty in motion



P30
Visual Presenter

P30

Visual Presenter



The P30 is ideal for a diverse range of presentation applications – from business and research to industry and education.

Elmo's state-of-the-art technologies deliver both moving and still images with exceptional beauty and clarity.

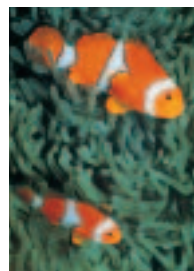
85 850,000-pixel progressive scan CCD camera

The P30's advanced camera system integrates an 850,000-pixel progressive scan CCD pickup that's capable of capturing not only the finest details of images — but moving objects as well! Combined with true XGA (1,024 x 768) resolution, the P30 reproduces three-dimensional objects and subtle shades of color with unsurpassed precision.



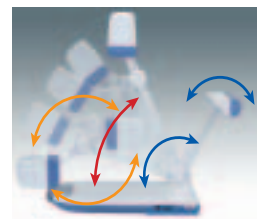
Capture crisp, live images

Now you can convey presentations more effectively and inspire your audience with vivid moving images on the big screen. With a frame rate of 20 fps, the P30 smoothly captures and reproduces moving images that can either be presented live or saved to your PC for future use.



Free Angle Flexible free-angle camera arm and lamp

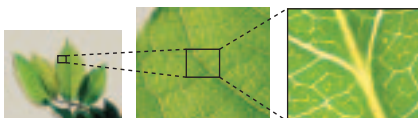
The P30's camera head can be rotated freely to capture objects at precise angles, making it easy to present objects with the exact look you want. And with the free-angle lamp, you also have all the flexibility you need to set ideal lighting conditions.



— Head — Arm — Lamp

60X Zoom 60X zoom

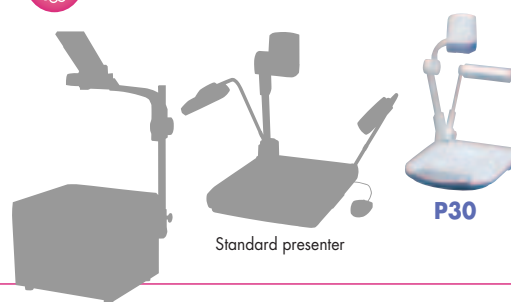
Focus in on the intricate details of your presentation with the 4X digital zoom function that can enlarge images up to 60 times when combined with the 15X optical zoom lens.



Optical 15X zoom

Digital 4X zoom

See how lightweight and compact the P30 is



Weighing in at just 10.4 lbs — half the weight of standard models — and measuring approximately 19 inches, the P30 is lightweight and compact enough to comfortably hand carry to any location.

OHP

Education/Training
Business/Industry

Business trip reports

Product demos

Presentations at
medical/academic meetings

Auctions for high-quality items

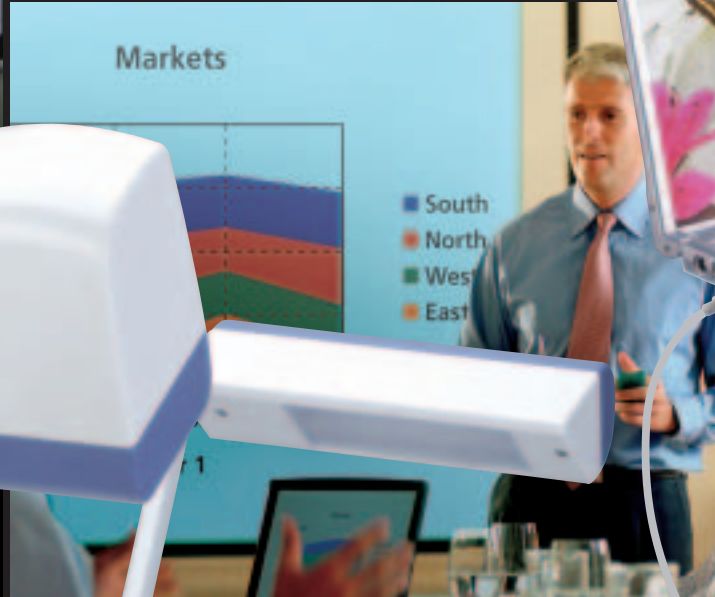
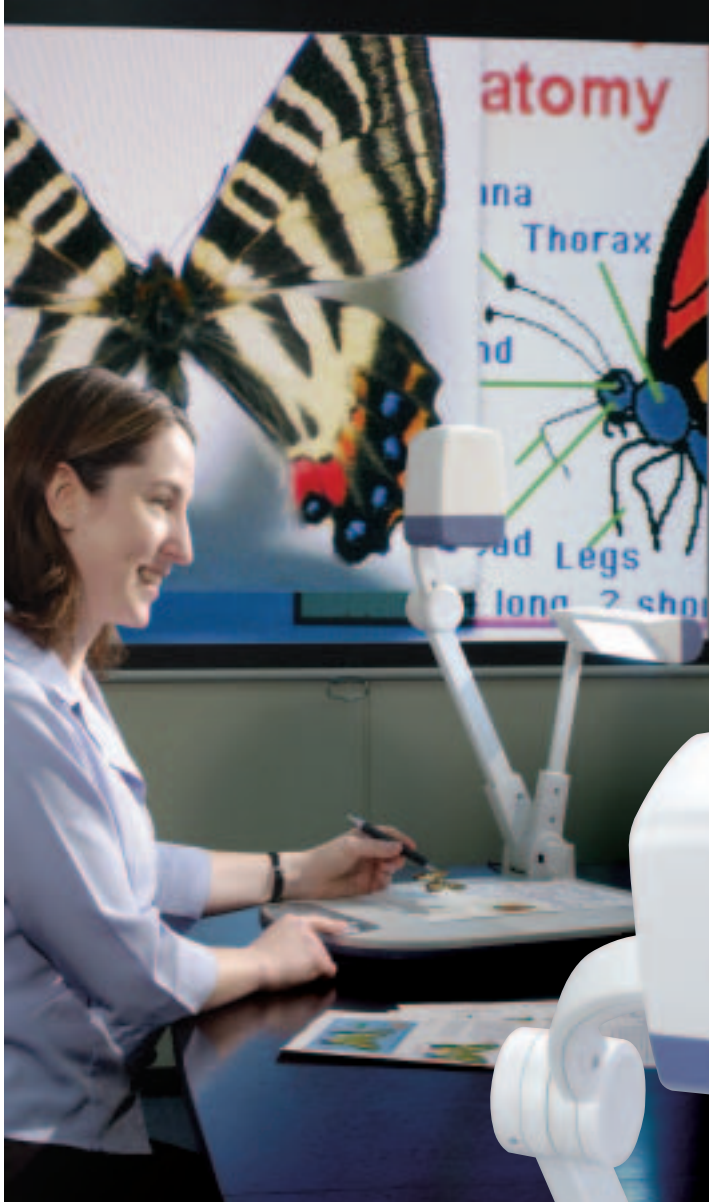
Presentations of large A3-size
documents or photos

Lightweight and Compact



Crystal Clear Expression





Versatile output

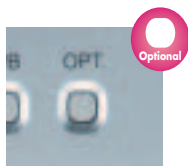
The P30's versatile output connections bring you greater presentation freedom and flexibility. The DVI output lets you transfer high-quality video data without any loss of image quality, while an analog RGB output makes it easy to connect the P30 to an LCD projector or a PC monitor for true XGA-resolution display.

User-friendly interface

For the ultimate in easy and intuitive operation, the P30 incorporates a Jog Dial zoom control for quick zoom adjustments as well as an OPT (optional) button that gives you the flexibility to assign a frequently used function to the front panel.



Jog Dial



Optional button



Quick and easy PC file transferring opens up a new world of possibilities.

With the convenience of bundled software, creating outstanding PC presentations has never been easier.



"Image Mate for Presentation"

- Annotation tools let you draw lines (freehand or straight) in a variety of colors to highlight and enhance screen images, right from your PC.
- Split Screen gives you a platform for comparing live video to stored images — side by side for greater visual impact.



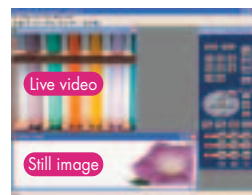
"Image Mate for Movie Creation"

- Moving images can be easily saved to a PC for future use as analog RGB 850,000-pixel video files. Since files are saved in common AVI or WMV format, they can be played back effectively using Windows Media® Player*.

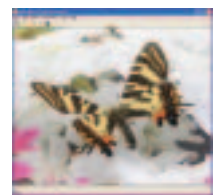
* AVI/WMV file playback is available with Windows Media Player versions 6.4 to 10.



Annotation



Split Screen function



Save video files



TWAIN driver

With TWAIN compatibility, the P30 brings you the versatility to import saved image files

to commercially available photo retouching software.

Make effective presentations – even without a PC!



SD Memory Card-ready

Presentation data, such as PowerPoint® files and digital camera images, previously saved to an SD Memory Card (sold separately) is ready to go even without a PC. Thanks to the P30's Image Mate for Presentation software, you can output SD Memory Card data through the P30 for use in slideshow

presentations. Now with the flexibility of SD Memory Card storage, which can hold up to 2,048 image files, as well as conventional PC and camera images, the P30 provides a new dimension of presentation possibilities.

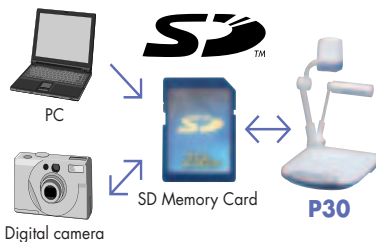


Split screen and slideshow display

Images previously saved to an SD Memory Card can be conveniently displayed as split screens (9 or 16 splits) or slideshows, enabling quick file searches and smooth operation.



USB 2.0 SD Memory Card slot



Digital camera

P30



Other key features



State presetting

Instead of having to readjust the machine every time you use it, the P30 lets you store up to eight frequently used settings such as iris selection, white balance and lamp on/off. With quick and easy access to settings, your preferred adjustments are always ready to go.



A3-size shooting area

With a large A3-size shooting area, the P30 captures a wider image field compared to the conventional B4 size.



Slide Shooting Adapter

Even conventional slides are easily presented using the P30's included Slide Shooting Adapter. (See the back page.)



Cord cover

Cables are always neat and tidy thanks to the rear panel cord cover.



Note: The cord cover pictured here is made transparent for explanatory purposes.

P30 Specifications

Model	P30		
Camera	Image pickup device	1/3" progressive scan CCD	
	Total pixels	1,077 (H) x 788 (V), 850,000 pixels	
	Effective pixels	1,034 (H) x 779 (V)	
	Frame rate	20 fps	
	Resolution	600 (H) x 600 (V) TV lines	
	RGB output	450 (H) TV lines	
	Video output	450 (H) TV lines	
Optics	Zoom	Powered [with variable speed function], 15X optical, 4X digital	
	Lens	F2.8, f=4.7 to 70.5 mm	
	Shooting area	Max. 16" x 12" (405 x 303 mm), min. 1 1/8" x 7/8" (30 x 23 mm)	
	Focus	Auto/Manual (powered)	
	Iris	Auto (with level adjustment)/Manual	
Functions	White balance	Full-auto/One-push/Manual	
	Negative/positive conversion	Provided	
	Aperture enhancement	Provided	
	Text mode	Provided	
	Edge enhancement	Provided	
	Color/B&W selection	Provided	
	Pause mode	Provided	
	Digital magnification	Provided (2X, 4X, Scroll)	
	Gamma adjustment	Provided	
	OSD (on-screen display)	Provided	
	Slideshow	Provided (SD Memory Card image)	
	Split screen	Provided (SD Memory Card image, 9-split, 16-split)	
	Image save	Provided (onto SD Memory Card)	
	Image rotation	Provided (0°, 180°)	
	State presetting	Up to 8 user settings	
Sync. system	Internal		
Input/output	Internal selection	Int./RGB1	
	Analog RGB output	XGA (1,024 x 768 @60 Hz), VESA	
	Video output	Composite, S-video	
	RGB input	Provided	
	DVI output	Provided	
PC interface	RS-232C port	Provided	
	USB port	Provided	
Memory card	SD Memory Card slot	Provided	
Lighting	Upper lighting unit	Provided (twin fluorescent lamp)	
Others	Accessories	I/R remote control, Slide Shooting Adapter, cables, etc.	
	Dimensions [W x D x H]	Set up	14 7/8" x 19" x 23" (377 x 482 x 582 mm)
		Folded	14 7/8" x 19" x 7 1/8" (377 x 482 x 180 mm)
	Weight	10.4 lbs (4.7 kg)	
	Application software	Image Mate for Presentation, Image Mate for Movie Creation, TWAIN driver [for Windows® 2000 (SP4 or later), Windows® XP (SP2 or later)]	
	Power source	AC 100 to 240V, 50/60 Hz	

H: horizontal, V: vertical

Design and specifications are subject to change without prior notice.

ELMO is a trademark of ELMO COMPANY, LIMITED.

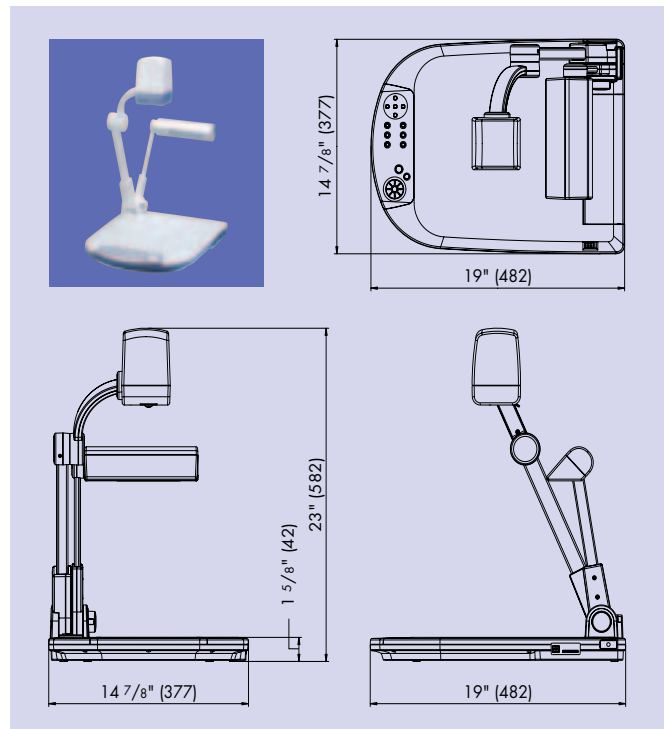
SD logo is a trademark. Other brand names and product names may be trademarks or registered trademarks of their respective owners.

ELMO's Helping to Provide a Greener Future for Our Children

This ELMO product complies with RoHS Directive 2002/95/EC (Restriction Of the use of certain Hazardous Substances in electronic equipment). This compliance helps to ensure a healthier and greener environment for all our children.

Profile

All dimensions in inches (mm)



Rear Panel



Accessories



Slide Shooting Adapter

Options



5.6-inch color LCD monitor
LM-5611A

Monitor shoe
MS-30



ELMO CO., LTD. (Head Office and Factory)'s QMS/EMS has been registered to ISO 9001:2000 & ISO 14001:2004.

ELMO
FOCUS ON THE FUTURE

ELMO CO., LTD.

6-14, Meizen-cho, Mizuho-ku,
Nagoya, 467-8567, Japan
E-mail : foreign-div@elmo.co.jp

Distributed by

Additional technical information is available from any of the following subsidiary companies:

ELMO USA Corp.

Headquarters
1478 Old Country Road,
Plainview, NY 11803-5034, U.S.A.
Tel. (516) 501-1400 Fax. (516) 501-0429
E-mail : elmo@elmousa.com
Web : <http://www.elmousa.com>

West Coast Branch

Cypress Pointe Business Park,
5676 Corporate Drive,
Cypress, CA 90630, U.S.A.
Tel. (714) 828-8457 Fax. (714) 828-8429

ELMO (Europe) G.m.b.H.

Neanderstr. 18,
40233 Düsseldorf, Germany
Tel. (0211) 386470 Fax. (0211) 376630
E-mail : info@elmoeurope.com
Web : <http://www.elmoeurope.com>



This brochure is printed on recycled paper with soy ink.

E05003 Printed in Japan (O) 05/2006